

1-CONTROL POINT
SET I.P. S-SIDE
TREE STUMP
X= 2525981.7259000
Y= 371519.6808000
ELEV.= 660.75

4 POB
(SET PK&SHINER)
X= 2526268.5038000
Y= 371295.9729000
ELEV.= 660.54

3-BM
NE CORNER
BRIDGE ABUTMENT
X= 2526687.6892000
Y= 371100.8801000
ELEV = 661.38

5- POT
(SET PK&SHINER)
X= 2527031.5996000
Y= 370938.9454000
ELEV.= 657.35

2-BM
TOP CONC.
N-SIDE OF
BRACE POST
X= 2526994.0083000
Y= 370921.4694000
ELEV.= 658.27

Project Name: RR OVERPASS
Description:
Horizontal Alignment Name: CENTERLINE
Description: DAIRY LANE
Style: Centerline
Input Factor: 1.0000000

Element: Linear
POB (4) 10+00.00 2526268.5038 371295.9729
PC (7) 12+84.71 2526519.4050 371161.4017
Tangent Direction: S 61°47'34.98" E
Tangent Length: 284.712

Element: Circular
PC (7) 12+84.71 2526519.4050 371161.4017
PI () 13+19.71 2526550.2457 371144.8602
CC (8) 2526826.6325 371734.2117
PT (9) 13+54.64 2526582.6841 371131.7258
Radius: 650.000
Delta: 6°09'49.60" Left
Degree of Curvature(Arc): 8°48'53.05"
Length: 69.926
Tangent: 34.997
Chord: 69.892
Middle Ordinate: 0.940
External: 0.941
Tangent Direction: S 61°47'34.98" E
Radial Direction: S 28°12'25.02" W
Chord Direction: S 64°52'29.78" E
Radial Direction: S 22°02'35.42" W
Tangent Direction: S 67°57'24.58" E

Element: Linear
PT (9) 13+54.64 2526582.6841 371131.7258
PC (14) 14+63.00 2526683.1265 371091.0564
Tangent Direction: S 67°57'24.58" E
Tangent Length: 108.364

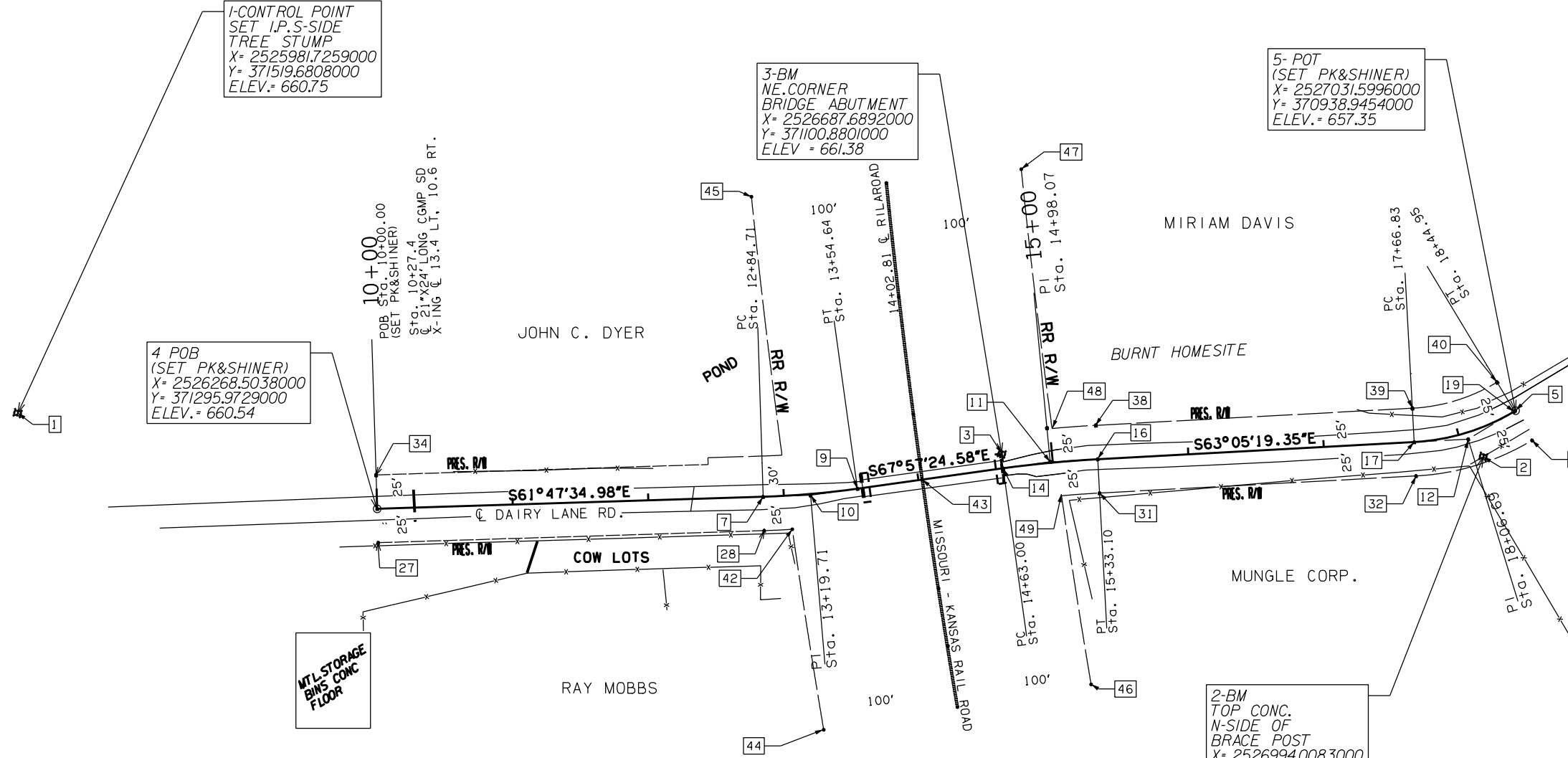
Element: Circular
PC (14) 14+63.00 2526683.1265 371091.0564
PI () 14+98.07 2526715.6320 371077.8948
CC (15) 2526373.4998 370326.3628
PT (16) 15+33.10 2526746.9034 371062.0222
Radius: 825.000
Delta: 4°52'05.23" Right
Degree of Curvature(Arc): 6°56'41.79"
Length: 70.096
Tangent: 35.069
Chord: 70.075
Middle Ordinate: 0.744
External: 0.745
Tangent Direction: S 67°57'24.58" E
Radial Direction: S 22°02'35.42" W
Chord Direction: S 65°31'21.97" E
Radial Direction: S 26°54'40.65" W
Tangent Direction: S 63°05'19.35" E

Element: Linear
PT (16) 15+33.10 2526746.9034 371062.0222
PC (17) 17+66.83 2526955.3287 370956.2303
Tangent Direction: S 63°05'19.35" E
Tangent Length: 233.737

Element: Circular
PC (17) 17+66.83 2526955.3287 370956.2303
PI () 18+06.69 2526990.8645 370938.1932
CC (18) 2527027.7464 371098.9037
PT (19) 18+44.95 2527030.7090 370938.9311
Radius: 160.000
Delta: 27°58'20.12" Left
Degree of Curvature(Arc): 35°48'35.50"
Length: 78.113
Tangent: 39.851
Chord: 77.340
Middle Ordinate: 4.743
External: 4.888
Tangent Direction: S 63°05'19.35" E
Radial Direction: S 26°54'40.65" W
Chord Direction: S 77°04'29.41" E
Radial Direction: S 1°03'39.47" E
Tangent Direction: N 88°56'20.53" E

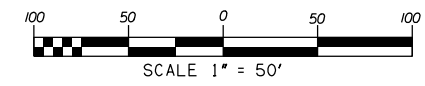
Elements are not collinear

Element: Linear
PT (19) 18+44.95 2527030.7090 370938.9311
POE (5) 18+45.84 2527031.5996 370938.9454
Tangent Direction: N 89°04'48.59" E
Tangent Length: 0.891



LIST COORDINATES Report Page 1 of 1
Project: RR OVERPASS

Alignment: NAME	NORTHING	EASTING	ELEVATION	PREFERENCE	des
1	371519.6808	2525981.7259	660.7462	default	BENCHMARK
2	370921.4694	2526994.0083	658.2741	default	BENCHMARK
3	371100.8801	2526687.6892	661.3815	default	BENCHMARK
4	371295.9729	2526268.5038	660.5356	default	SURVEY MONUMEN
5	370938.9454	2527031.5996	657.3452	default	SURVEY MONUMEN
6	362230.9061	2520939.8229	610.7900	Cogo Points	BENCHMARK
10	371144.8602	2526550.2457	660.3960	Cogo Points	
11	371077.8948	2526715.6320	660.3845	Cogo Points	PI
12	370938.1932	2526990.8645	657.2199	Cogo Points	PI
13	370962.8189	2528320.5881	661.3098	Cogo Points	PI
20	368905.3900	2532084.8674	0.0000	Cogo Points	
21	370955.4544	2526565.9604	636.5278	Cogo Points	RR
22	370997.8815	2526582.3636	636.4382	Cogo Points	RR
23	371038.1242	2526597.6522	636.3296	Cogo Points	RR
24	371158.6981	2526645.7773	636.0895	Cogo Points	RR
25	371238.9987	2526679.7139	635.8464	Cogo Points	RR
26	371316.2620	2526713.7600	635.5052	Cogo Points	RR
41	371176.3215	2526544.8816	13.8098	Cogo Points	RR
42	371129.8309	2526526.0515	13.8098	Cogo Points	RR
43	371113.6479	2526627.3317	0.0000	Cogo Points	
44	370990.2758	2526472.2189	0.0000	Cogo Points	RR
45	371357.2119	2526622.5289	0.0000	Cogo Points	RR
46	370920.6330	2526659.7019	0.0000	Cogo Points	RR
47	371275.3121	2526804.9911	0.0000	Cogo Points	RR
48	371098.4070	2526729.0947	0.0000	Cogo Points	RR
49	371051.9991	2526710.3261	13.8098	Cogo Points	RR



PLS	RES	SOUTHEAST 3 CIRCUIT ENGINEERING DIST. SURVEY DATA SHEET R.R. OVERPASS ON DAIRY LANE SHEET 1 OF 1 PROJECT: ATOKA CO. JP 31169(05) SHEET NO. S001
DRAWN	RES	
CHECKED		
APPROVED		
CREW		